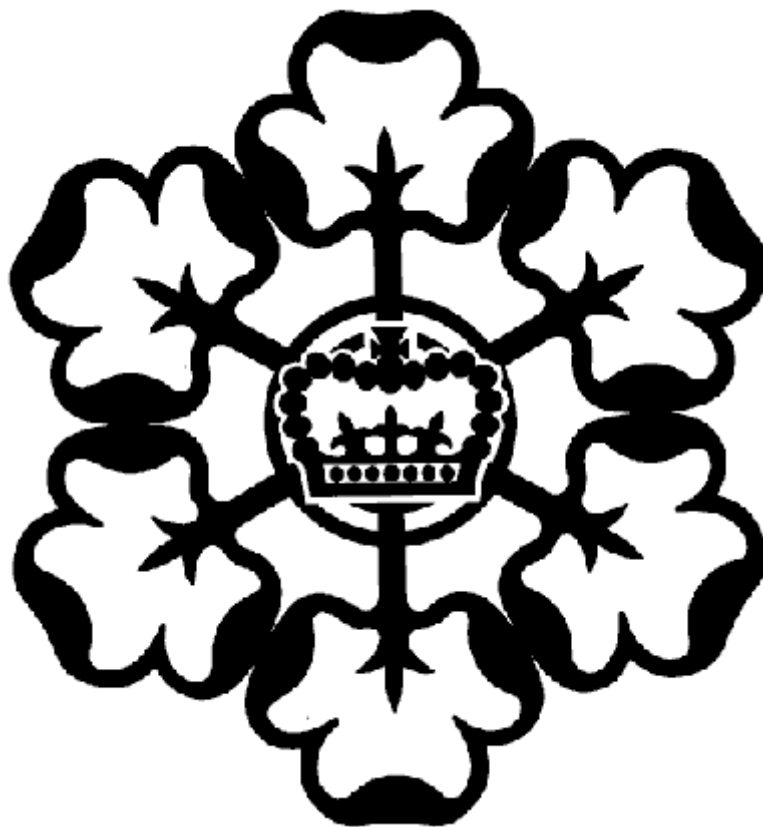


# Queen's Guide Award Resource



Date: September 2013

Written by: Rebecca Elliott (NEE QGA Coordinator), Ruth Cubitt (NYNE QGA Coordinator)  
Information taken from: Girlguiding Senior Section website, Senior Section CD

## Contents

Queen’s Guide Award - An Introduction.....	3
Queen’s Guide Award - Frequently Asked Questions .....	4
Queen’s Guide Award - Processes.....	6
Interest to Celebration.....	7
Service in Guiding Element 1.....	8
Service in Guiding Element 2.....	8
Service in Guiding Element 3.....	10
Service in Guiding Element 4.....	11
Community Action .....	12
Personal Skill Development .....	12
Outdoor Challenge.....	13
Residential Experience .....	14
Queen’s Guide Award - Mentor notes .....	16

## Queen's Guide Award - An Introduction

### What is it?

The Queen's Guide Award is the highest award members can work towards in Guiding. It gives you the chance to develop your own skills and contribute even more to Guiding.

### Who can do it?

Any member of the Senior Section aged 16 to 25

### How long does it take?

The award must be completed within three years or before your 26th birthday, whichever is sooner.

### Where can I find out more?

Look at the information on the Senior Section website ([www.girlguiding.org.uk/seniorsection](http://www.girlguiding.org.uk/seniorsection)), ask your local county coordinator or your local Senior Section Adviser. Why not also ask Senior Section members in your area who have completed or are completing the award?

### What does it involve?

The award is split into five sections: service in Guiding, outdoor challenge, personal skill development, community action and residential.

**Service in Guiding** - take an active role in Guiding at a range of levels.

**Outdoor challenge** - Build your teamwork and leadership skills in the outdoors.

**Personal Skill Development** - start a new skill and develop it, or take an existing skill to a new level for a minimum of 60 hours over 12 months.

**Community Action** - get more involved with the world around you and gain a greater understanding of it through practical and research projects of your choice.

**Residential** - spend two nights and three days away with new people.

For further details about the sections of the award see the Senior Section website.

## **Queen's Guide Award - Frequently Asked Questions**

### **How do I get started?**

Get started by talking to your local Commissioner or Unit Leader. They will put you in contact with your County Queen's Guide Coordinator to get you started and arrange for your Go! record to be updated.

### **Can I count projects that I am doing for other awards?**

Yes, as long as they are included in your initial plan. Projects that you are doing at school, college or work may not be used, although if you wish to develop these projects further then they may count towards your Award.

### **Can I use one project for more than one clause or element?**

No, they can only be used once.

### **Do I need to make my Promise?**

Yes, you'll need to before the end of your second year working for the award.

### **Who should I choose as a mentor?**

You should choose someone who you know through Guiding and can offer you advice and guidance while you are working on the award.

### **Can I make changes to my initial plan?**

Yes. They should be talked through with your Mentor. You should also keep your Coordinator informed.

### **Who is able to help me?**

Your Mentor and your county Queen's Guide Coordinator. You could also talk to Senior Section leaders and Queen's Guides. There is also a region Queen's Guide Coordinator if you need more advanced information or assistance.

### **Will it take time out from my unit meetings?**

This depends on the projects you choose to do. Make sure you talk to your unit leader about any plans that will affect your attendance at the unit or involve the unit.

### **Can I take a break from the award?**

You can take up to 12 months out from the award, which should be planned at the beginning of the Award wherever possible. It is possible to arrange time out during the Award if the need arises by discussing this with your Mentor and Coordinator.

### **Can I restart the award if I stop?**

If you decide to stop working on the award, you can restart after at least a year's gap. You can only restart doing the award once. Any challenges that you completed during your first attempt cannot be counted towards a second attempt, but any that were planned and not started the first time round can still be used.

### **What happens when I finish the award?**

Once you have completed all the clauses, complete your Record Book and send it to your Coordinator. She will confirm that you have completed the Award, send the book to CHQ Commonwealth Headquarters to be signed by the Chief Guide and inform your Country/Region office.

It's a good idea to take a photocopy of your Record Book before you send it to anyone and always to send it by Recorded/Special Delivery.

After your award is confirmed, it's time to party!

Girlguiding will invite you to a celebration of your award. It's a great chance for your family and all those who supported you to share in celebrating this fantastic achievement.

### **I've really enjoyed completing the award, how can I encourage others to take part?**

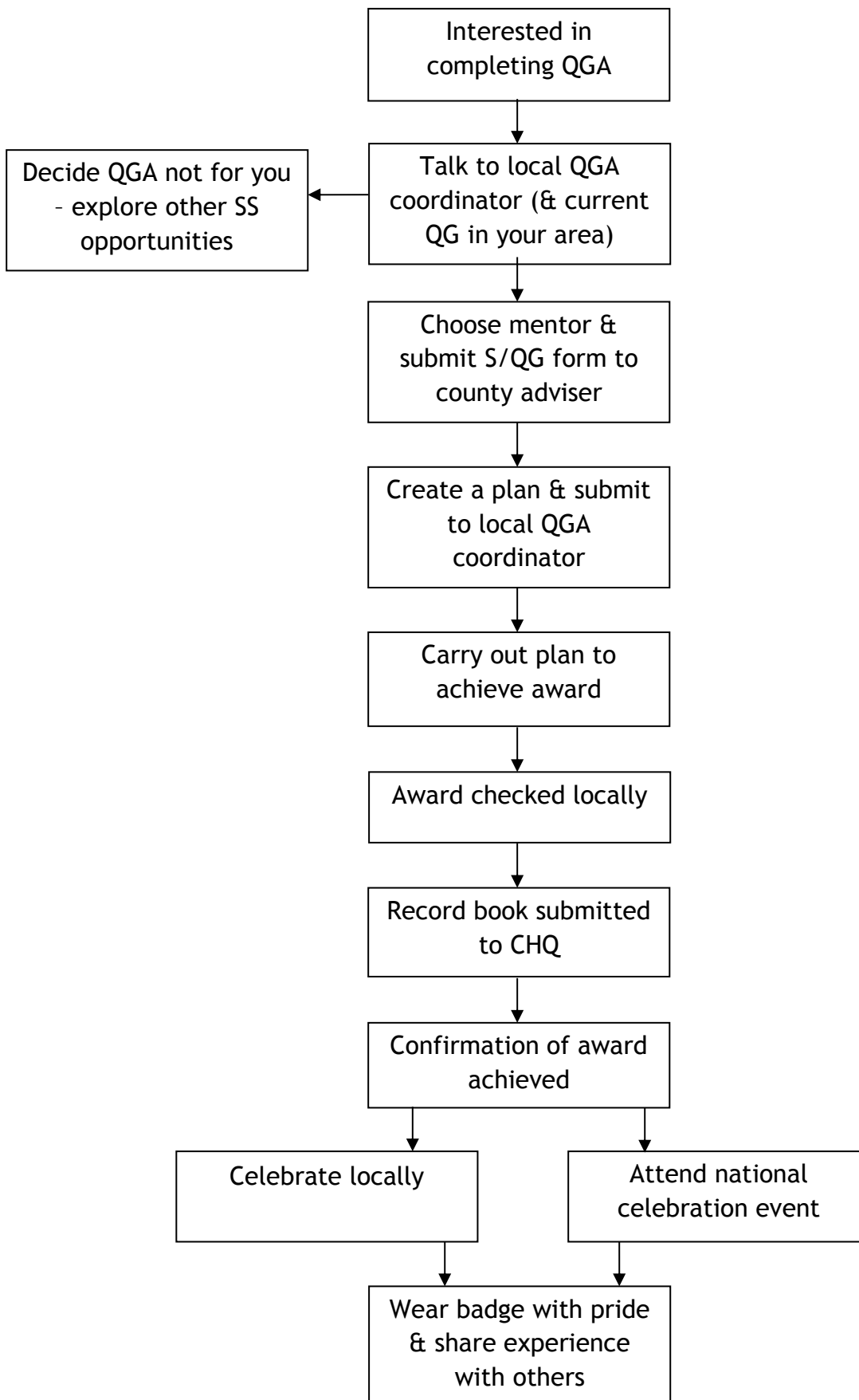
The best way is to talk about it. Share your experiences with other Senior Section members. Offer to talk about your experiences at Senior Section events or at unit meetings.

## Queen's Guide Award - Processes

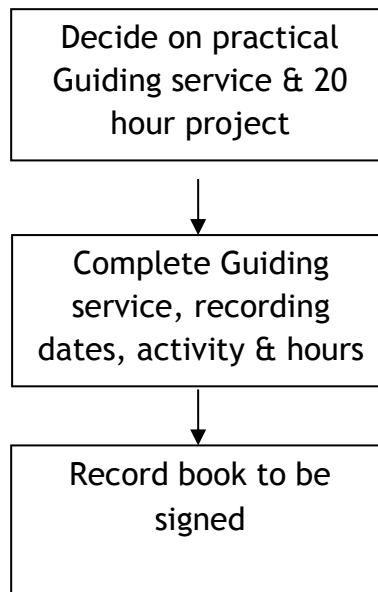
The following pages give details of the processes involved in the Queen's Guide Award.

- Interest to Celebration
- Service in Guiding Element 1
- Service in Guiding Element 2
- Service in Guiding Element 3
- Service in Guiding Element 4
- Community Action
- Personal Skill Development
- Outdoor Challenge
- Residential Experience

## Interest to Celebration

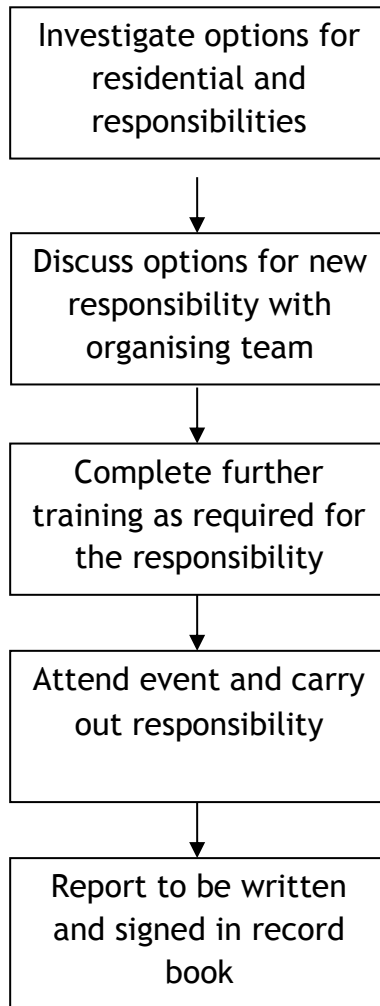


## Service in Guiding Element 1

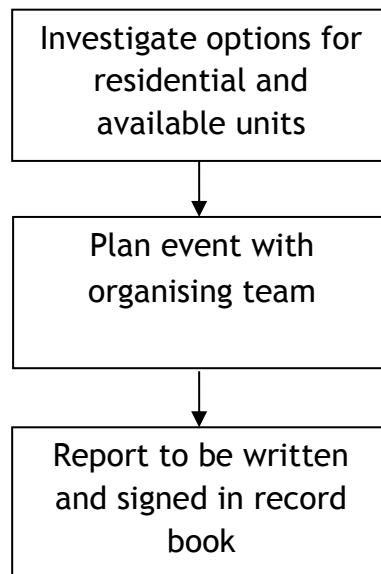




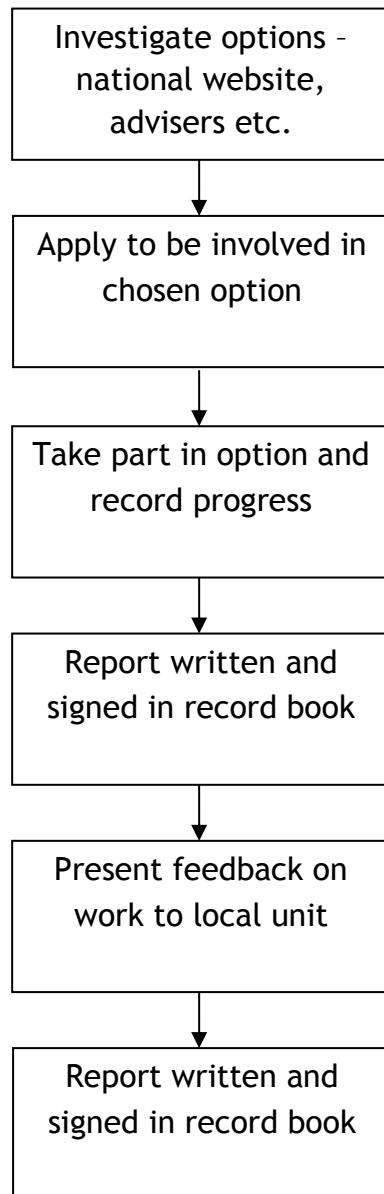
## Service in Guiding Element 2



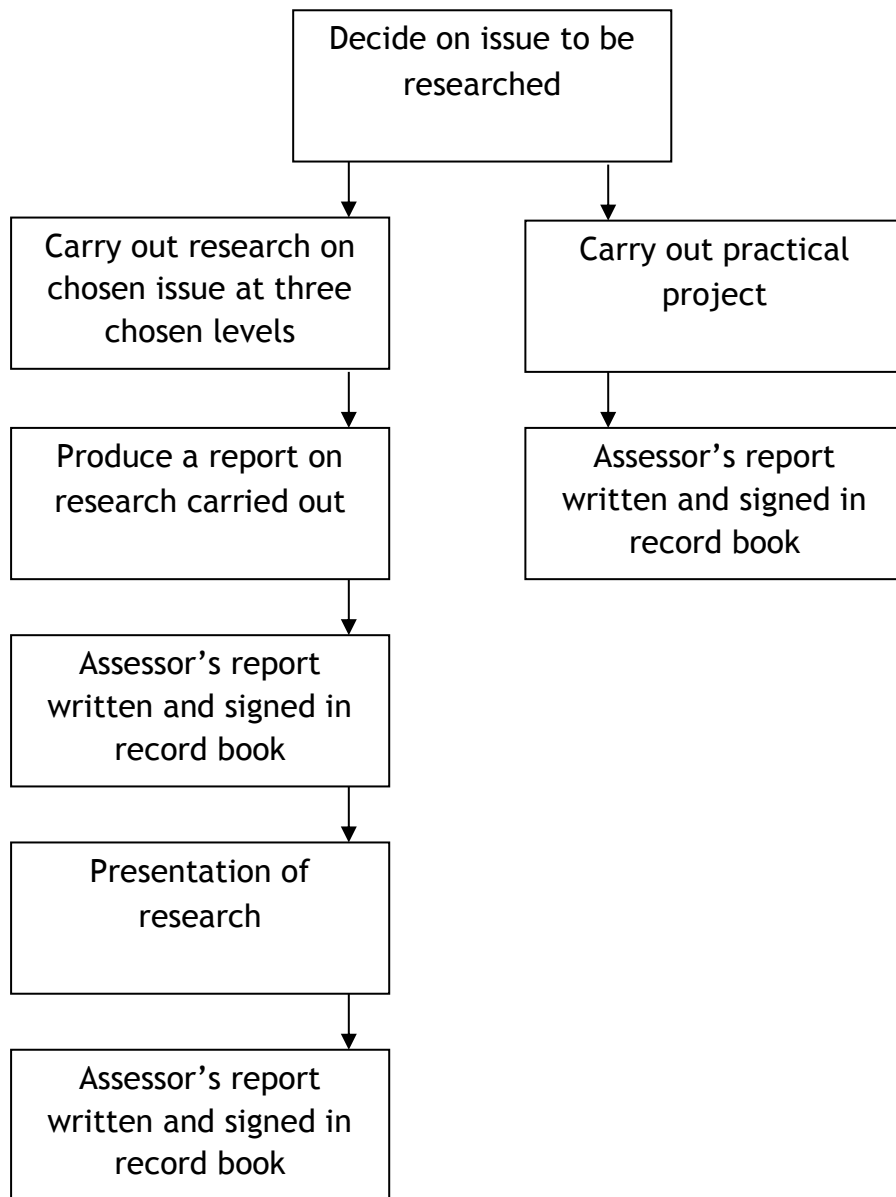
### Service in Guiding Element 3



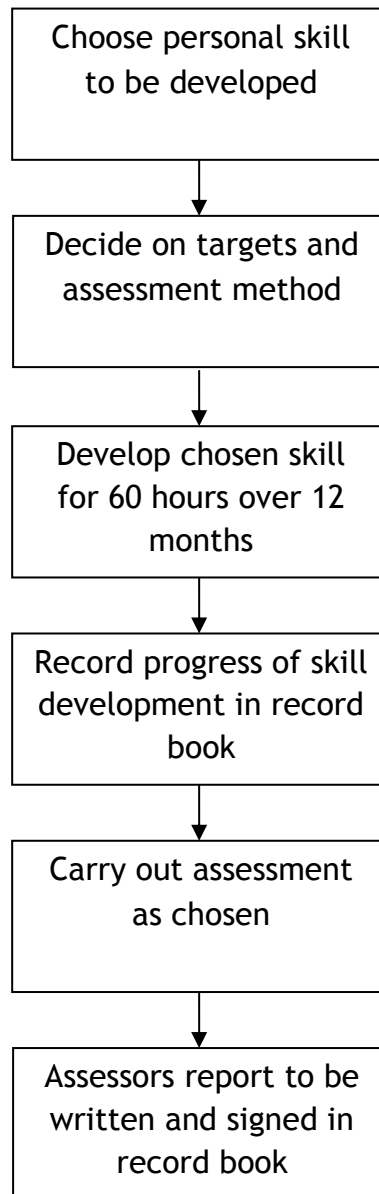
## Service in Guiding Element 4



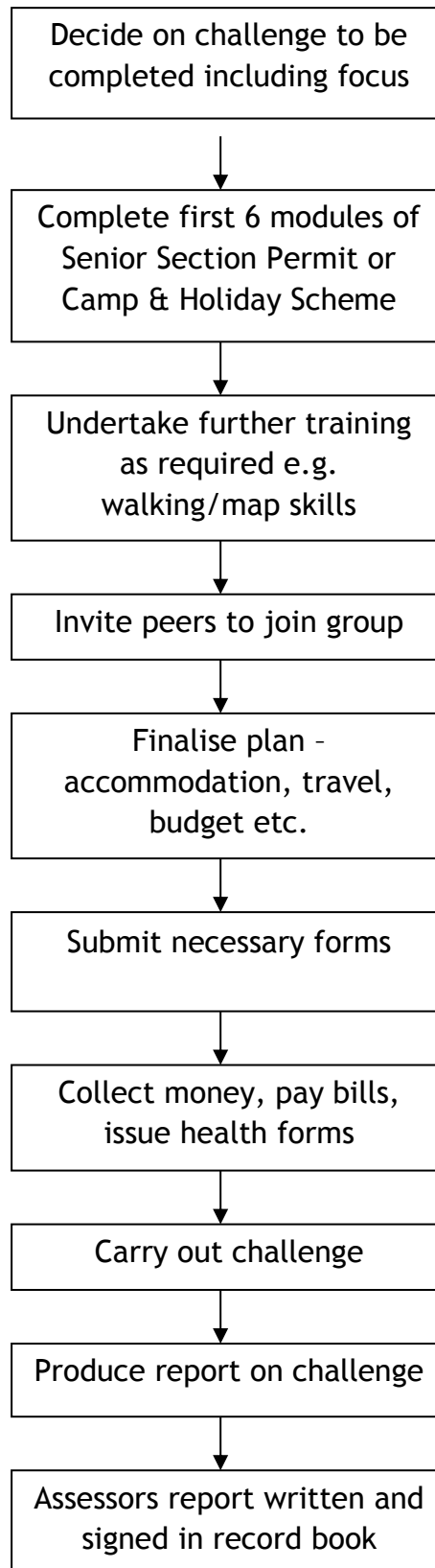
## Community Action



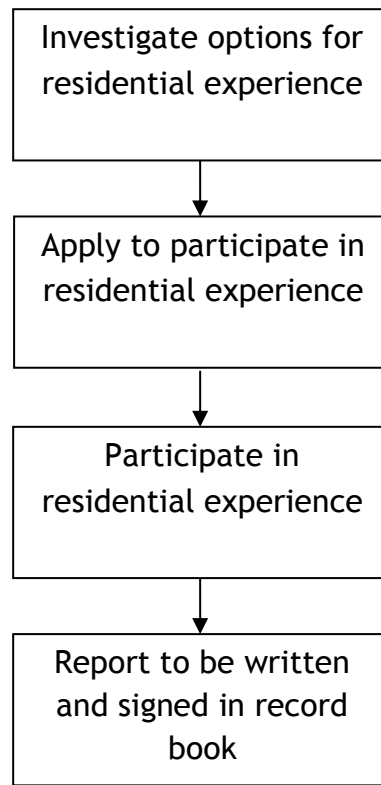
## Personal Skill Development



## Outdoor Challenge



## Residential Experience



## Queen's Guide Award - Mentor notes

There are no formal qualifications required to become a Queen's Guide Mentor. You will have been chosen because the Queen's Guide candidate believes you are the best person for the job. Your main responsibilities in your role as their Mentor are:

- Provide support throughout completion of the award,
- Provide advice (you don't have to know everything - that's what the county and region advisers are there for!),
- Ensure that what has been chosen is a suitable challenge for the candidate,
- Celebrate with the candidate when all the hard work is done.

This pack contains processes for each section of the award, and one for the whole journey from interest to completion. There are also some FAQs to get you started. Each county has a Queen's Guide Adviser who will be able to answer your questions or refer them to the region adviser if necessary.

The Queen's Guide Award is a challenging and rewarding experience for Senior Section members, and you have an important part to play in their journey - good luck!

---

Girlguiding North East England  
7 Alpha Court, Monks Cross Drive, Huntington, York YO32 9WN  
01904 676076  
info@girlguidingnortheast.org.uk  
[www.girlguidingnortheast.org.uk](http://www.girlguidingnortheast.org.uk)