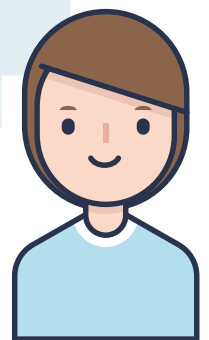


STUDENTS WELCOME

A guide to supporting students

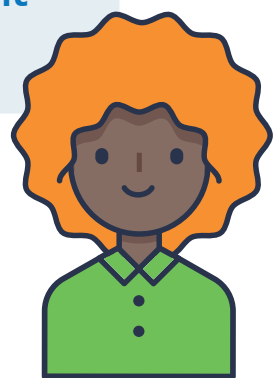
I wanted to have fun, get to meet 'real people' i.e. not students.

Margaret (Student, Sheffield)



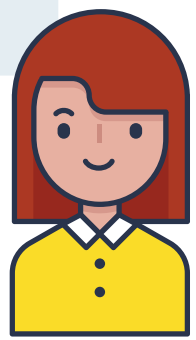
I thought it (volunteering) would be a great way to break out of the student bubble once a week and do something a bit different

Miriam (Student, Sheffield)



Guiding is excellent for your CV and I also always really enjoyed volunteering with guiding at home

Natalie (Student, Sheffield)



Students who have been involved with guiding previously often come fully qualified with their LQ and a wealth of experience:



Ensure they receive a warm welcome and are put to good use, not only running games.



Wherever possible aim to match them with what they want / their experience rather than just filling a gap



Could they help at County level on a more flexible basis rather than helping at a regular unit?

Additional resources (from the website):



Student FAQ's - Staying involved



How to support young women who are relocating

Tips for ensuring a smooth relationship:



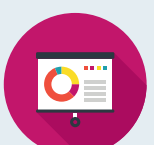
Advertise in a variety of ways and places to ensure you reach as many students as possible e.g. college and university hubs, social media, personal contacts, local guide office, sports clubs, shopping centres



It is possible to run units completely with students where there is a good supply of them - ensure you give appropriate support where possible



Students will often return to their home unit to help so it's useful to stay in touch with them and invite them back. They like to stay in touch through social media, text and email



Make students feel welcome and involved by inviting them to meetings and training events

Tips for ensuring a smooth relationship:



Consider amending your young women's GO records to Occasional Helpers when they go off to study so they still receive information but you don't have to pay Subscription for them



Provide information about or offer to help find the relevant Girlguiding contact in the new student area so they can remain involved



It is better to have guiding for shorter terms with good quality student leaders than no guiding at all. Parents appreciate their commitment



Check before you pay. Some students have their subs paid by their units at home if they are still involved